



Sushido Menu

<https://menuweb.menu/restaurants/lisboa/sushido-7>
Estrada Das Laranjeiras 189B, Lisboa, Portugal
+351217272465 - sushido.pt

Categories

Dessert

Signature Rolls

Onigiri

Temaki

Entrées

Sushi Rolls

Sushi

Chef's Specialties

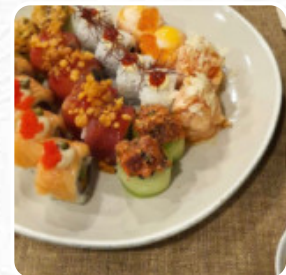
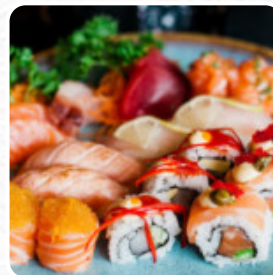
Hot Drinks

Chef's Special Rolls

Sushi Bar Entrees

Cold

Tatakis



[View gallery](#)

[View menu](#)

[View reviews](#)

Sushido Menu



Entrées

MINI VEGGIE 13 €

Sushi Rolls

SUSHI

Snacks

MISO SOUP 3 €

Sushi

SASHIMI

Chef's Specialties

HOISIN DUCK 7 €

Hot Drinks

COFFEE

Chef's Special Rolls

DOUBLE SALMON

Sushi Bar Entrees

CHIRASHI 14 €

Cold

BANANA BLOSSOM 8 €

Tatakis

TATAKI DE SALMÃO 9 €

Sides

WASABI

Entradas (Small Dishes)

TATAKI DE ATUM 11 €

Sushi Dishes & Small Bites

SALMON X TUNA KIMUCHI 8 €

Traditional Nigiri And Sashimi

BLUEFIN TUNA 5 €

Choose Your Fish

WHITEFISH 4 €

5 Bites

SALMON 2 €

Especiales Konnichiwa

SPICY AJI 8 €

Restaurant Category

VEGETARIAN

Temaki

SALMON TUNA KIMUCHI 7 €

RED MAMBO 7 €

Onigiri

ZA'ATAR X OLIVES 2 €

MATCHA X EDAMAME 2 €

MAGURO X MAYO 2 €

RAW MAGURO X KIMUCHI 2 €

Signature Rolls

SALMON TERIYAKI HAKO 7 €

BURNING TUNA 9 €

JACK 8 €

NAPALM 9 €

MONSTER PRAWN 9 €

Sushido Menu



Ingredients Used

TUNA

HONEY

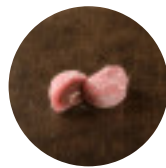
SALMON

SOFT SHELL CRAB

SALMON

4 €

Dessert



SUSHIDŌ

22 €

SUSHIDŌ MINI

14 €

TRADICIONAL MINI

16 €

MENU SAKE SALMÃO

30 €

CEVICHE SALMÃO X ATUM

10 €

SUSHI TO SHAHIMI 30PCS

35 €

SUSHIDŌ MAXI

35 €

MOCHI

5 €

[View gallery](#)

[View menu](#)

[View reviews](#)

Sushido Menu



Sushido

Estrada Das Laranjeiras 189B,
Lisboa, Portugal

Opening Hours:



Made with [Menu](#)