



Sushihana Menu

<https://menuweb.menu/restaurants/porto-2/sushihana>
Rua Professor Mota Pinto 138, Porto 4100-354 PORTO, Portugal
+351224045549,+351916551972,+442071994300 - sushihana.pt

Categories

[Especialidades Sushihana](#)

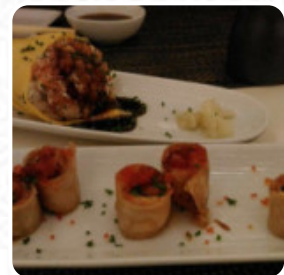
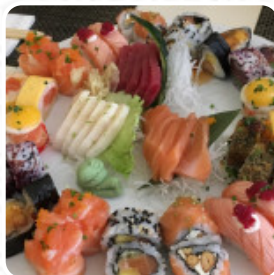
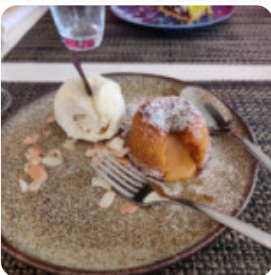
[Menu De Almoço - Sushi](#)

[Dessert](#)

[Starters](#)

[Combos & Freestyles \(Sushi, Sashimi E Especialidades\)](#)

[Partilhar Do Sushibar](#)



[View gallery](#)

[View menu](#)

[View reviews](#)

Sushihana Menu



Alcoholic Drinks

SANGRIA

Entrées

FRIED SHRIMP

Soups

MISO SOUP 4 €

Nigiri

SHRIMP 16 €

Sushi Rolls

SUSHI

Original Amigo-Pizza - Normal
Ø 30Cm

VEGI 5 €

Pasta

CHICKEN 17 €

Antipasti

APPETIZERS

Sandwiches

CALIFORNIA SANDWICH 7 €

Side Dishes

RICE

Menu

POKE SALMON 17 €

Soft Drinks

WATER 2 €

Bento Box

BENTO BOX TRADICIONAL 20 €

Kim Rolls

YASAI 10 €

Maki-Rolls

MAKI PHILADELPHIA 5 €

Bebidas

SODA 2 €

Entrantes

CREPE HARUMAKI 3 €

Sobremesas

SOBREMESA DO DIA 5 €

Hot Drinks

COFFEE

Furais

FURAI FRANGO 17 €

Tataki

TATAKI DE SALMÃO 14 €

Sherries

FINO 2 €

Pratos Quentes

FRANGO TERIAKI 20 €

Sushihana Menu



Especiais

POKE BOWL SALMÃO 16 €

URAMAKI (8 Und.)

EBIFURAI 7 €

Entradas (Small Dishes)

TATAKI DE ATUM 14 €

Chás & Infusões

CHÁ VERDE 2 €

Pâtes et Pizzas

VEGETABLES 15 €

Pizza cone salgados

SHRIMP 5 €

5 Bites

SALMON 7 €

Esfihas especiais (1)

DO CHEF 11 €

Sashimi - 5 Fatias

SAHIMI MIX 16 FATIAS 30 €

Menu De Almoço - Bebidas

COPO DE VINHO DO DIA 3 €

Nigiri (pequeno bloco de arroz feito a mão c/ fina cobertura - 2 unids)

MORIAWASE 5 UNIDS 14 €

Menu de almoço - sushi (entrada incluída crepe harumaki ou misoshiru)

SUSHI EXTRA 15 €

Menu primavera/verão - entradas incluídas crepe harumaki, misoshiro ou gyoza

SUSHI EXTRA (COMPLEMENTO AOS MENUS) 16 €

Sashimi

MORIAWASE 17 €

WHITE FISH 5 €

Sushi

SASHIMI

TATAKI MISO 14 €

Entradas

GYOSA DE FRANGO 7 €

USUZUKURI DE SALMÃO 16 €

Japanese Specialties

MISO SOUP

CHICKEN TERIYAKI

These Types Of Dishes Are Being Served

FISH

SOUP

Appetizer

TEMPURA

CEVICHE

Sushihana Menu



TARTARE

Main Course

| | |
|--------------------|------|
| YAKITORI DE FRANGO | 6 € |
| TIRADITO MIX | 18 € |
| SUSHIHANA | 12 € |

Hossomaki (4 unidades) - Ementa geral

| | |
|-----------------|-----|
| MAKI DE SALMÃO | 5 € |
| MAKI DE ATUM | 6 € |
| MAKI DE CAMARÃO | 6 € |
| MAKI DE MANGA | 4 € |

Partilhar Do Sushibar

| | |
|-------------------------------|------|
| USUZUKURI DE PEIXE BRANCO | 16 € |
| USUZUKURI DE SALMÃO E VIEIRAS | 19 € |
| CEVICHE SUSHIHANA | 19 € |
| MINI TARTARO ATUM | 13 € |
| TARTARO SUSHIHANA | 17 € |

Dessert



| | |
|----------------|------|
| SALMAO TERIAKI | 21 € |
| SEASONAL FRUIT | 3 € |
| CHEESECAKE | |

- PANNA COTTA
- BROWNIE
- BROWNIES

Starters

| | |
|--------------------------------|-----|
| CAMARÃO COM CROSTA DE AMÊNDOAS | 8 € |
| CAMARÃO FURAI | 7 € |
| GYOSA DE PORCO PRETO | 8 € |

| | |
|---------------------|------|
| CAMARÃO NO SAKE | 8 € |
| SHITAKE NA MANTEIGA | 7 € |
| SALMON TARTAR | 17 € |

Combos & Freestyles (Sushi, Sashimi E Especialidades)

| | |
|--------------------------------|------|
| COMBO TRADICIONAL 22 UNIDS | 30 € |
| COMBO TRADICIONAL 30 UNIDS | 40 € |
| FREESTYLE VEGETARIANO 14 UNIDS | 25 € |
| FREESTYLE 16 UNIDS | 25 € |
| FREESTYLE 25 UNIDS | 38 € |
| FREESTYLE – 50 UNIDS | 75 € |

Menu De Almoço - Sushi

| | |
|---------------------|------|
| SUSHI 1 SUSHI | 16 € |
| SUSHI 2 SASHIMI | 19 € |
| SUSHI 3 TEMAKI | 18 € |
| SUSHI 4 TATAKI | 20 € |
| SUSHI 5 TARTARO | 20 € |
| SUSHI 7 TRADICIONAL | 19 € |
| SUSHI 8 HOT | 20 € |

Ingredients Used



- BUTTER
- ONION
- MISO
- SHRIMPS
- BANANA
- CHOCOLATE
- SHRIMP
- SALMON

Especialidades Sushihana

Sushihana Menu



| | | | |
|----------------------------|------|--------------------------------|------|
| HOT PHILADELPHIA 8 UNIDS | 13 € | SPIDER ROLL 4 UNIDS | 9 € |
| HOT HANA 8 UNIDS | 14 € | EBITEN 4 UNIDS | 9 € |
| CREPE ROLL DO CHEF 6 UNIDS | 13 € | KIURIMAKI 4 UNIDS | 13 € |
| GUNKAN FIRE 4 UNIDS | 13 € | SUMMER ROLL 4 UNIDS | 9 € |
| ESPECIAL JÔ 4 UNIDS | 13 € | ESPECIAL SUSHIHANA 4 UNIDS | 10 € |
| GUNKAN TRILOGIA 3 UNIDS | 11 € | ESPECIALIDADE DO CHEFE 4 UNIDS | 14 € |
| FUTOMAKI 4 UNIDS | 10 € | | |

[View gallery](#)[View menu](#)[View reviews](#)

Sushihana Menu



Sushihana

Rua Professor Mota Pinto 138,
Porto 4100-354 PORTO, Portugal

Opening Hours:
Tuesday 12:30-15:00
Wednesday 12:30-15:00
Thursday 12:30-15:00
Friday 12:30-15:00
Saturday 12:30-15:00
Sunday 20:00-23:00

Made with [Menu](#)

