

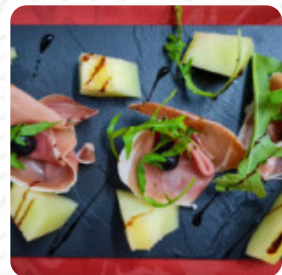
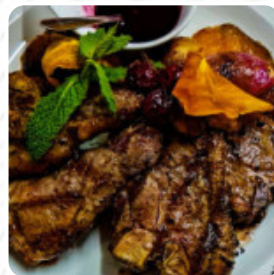
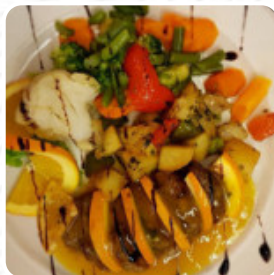


Dona Nina Menu

<https://menuweb.menu/restaurants/funchal/dona-nina-2>
Rua Da Ponta Da Cruz, 16A, Funchal 9000-250, Portugal
+33186995715

Categories

- Dessert
- Starters
- PEIXE E MARISCO
- Carnes
- Pasta
- Main Course
- Omeletes
- Peixe
- Massas
- Salads
- Entrées
- Fish Dishes
- Seafood
- Drinks
- Appetizer



[View gallery](#)

[View menu](#)

[View reviews](#)

Dona Nina Menu



Salads

SIDE SALAD

Entrées

SQUID

Fish Dishes

FISH OF THE DAY

Seafood

CALAMARI

Drinks

BOTTLE OF WATER 3 €

Sauces

CHEESE SAUCE

Appetizer

SEAFOOD PLATTER

Mariscos

POLVO À MODA DA CASA 20 €

Hot Drinks

COFFEE

Bread Selection

MELON WITH HAM 9 €

Carnes/Meats

BIFE NA PEDRA 23 €

Mar (Sea)

PEIXE FRESCO DO DIA 16 €

Acompanhamentos

BOLO DO CACO 3 €

Petiscos

CAMARÃO SALTEADO COM ALHO 13 €

Pasta, Risotto Vegetariano

MUSHROOM RISOTTO 13 €

Sala de Pasto

SPAGHETTI BOLOGNESE 12 €

Especialidades de Carne

REGIONAL KEBAB 18 €

Saladas (Almoço)

SALADA CÉSAR COM FRANGO 12 €

Pratos vegetarianos

TAGLIATELLE DE PESTO 11 €

Omeletas

MUSHROOM OMELETTE 12 €

Restaurant Category

FRENCH

Pasta

TAGLIATELLE PRIMAVERA 13 €

CARBONARA SPAGHETTI 13 €

Side Dishes

FRENCH FRIES

FRENCH FRIES

Dona Nina Menu



Main Course

SALADA DONA NINA	11 €
SALADA CESAR COM CAMARÃO	14 €

Omeletes

OMELETE MISTA	11 €
OMELETE DE CAMARÃO	13 €

Peixe

ESPETADA DE LULAS E GAMBAS	18 €
FILETE DE ESPADA COM CAMARÃO	18 €

Massas

TAGLIATELLE DE CAMARÃO	15 €
ESPARGUETE NERO	15 €

Fish



GRILLED SQUID	11 €
GRILLED SALMON	18 €
SMOKED SALMON	

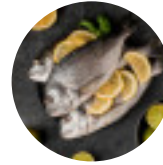
Carnes

STROGONOFF DE VACA	13 €
ESPETADA DE FRANGO COM ANANÁS	15 €
COSTELETA DE BORREGO	20 €

PEIXE E MARISCO

RISOTTO DE CAMARAO	
FILETE DE ESPADA COM BANANA E MOLHO DE MARACUJÁ	16 €
PRATO DE FRUTOS DO MAR	20 €
ESPETADA MISTA DE PEIXE E GAMBA	20 €

These Types Of Dishes Are Being Served



FISH
DESSERTS
MUSSELS

SOUP
SALAD

Dessert

CHOCOLATE MOUSSE	
PEITO DE PATO COM MOLHO DE LARANJA	20 €
BIFE ROQUEFORT	19 €
PEPPER STEAK	18 €
MIXED SALAD	7 €
TIRAMISU	

Starters

SOUP OF THE DAY	5 €
MEXILHÕES EM MOLHO DE QUEIJO	12 €
BRUCHETA COM QUEIJO PARMESÃO E PRESUNTO	9 €
BRUSCHETTA COM TOMATE E QUEIJO FRESCO	8 €
MOZZARELLA CAPRESSE COM MOLHO PESTO	9 €
GRILLED LIMPETS	11 €

Ingredients Used



HAM
CHEESE
BEEF

MELON
CHOCOLATE
VEGETABLES

Dona Nina Menu



SEAFOOD

BANANA

PRAWNS

GARLIC

FRUIT

PASSION FRUIT

SHRIMP

[View menu](#)

[View reviews](#)

Dona Nina Menu



Dona Nina

Rua Da Ponta Da Cruz, 16A,
Funchal 9000-250, Portugal

Opening Hours:

Monday 16:00-23:00
Tuesday 16:00-23:00
Wednesday 16:00-23:00
Friday 16:00-23:00
Saturday 12:00-23:00
Sunday 16:00-23:00

Made with [Menu](#)

