



Café de São Bento Menu

<https://menuweb.menu/restaurants/lisbon/cafe-de-sao-bento>

Rua São Bento 212 1200-821 LISBOA, Lisbon, Portugal

+351913658343,+351213952911,+33186995715 - cafesaobento.com

Categories

Sobremesas

Dessert

Entradas

Desserts

Entrées

Starters

Salads

Extras

Meat Dishes

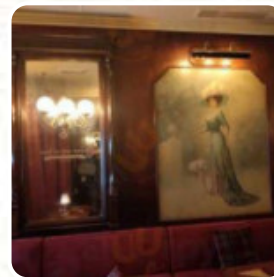
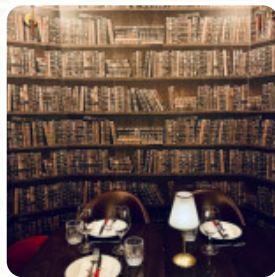
Appetizer

Beef Dishes

Antipasti - Starters

Steaks

Cocktails



[View gallery](#)

[View menu](#)

[View reviews](#)

Café de São Bento Menu



Salads

SIDE SALAD

Antipasti

APPETIZERS

Extras

FRIED EGG 3 €

Meat Dishes

BIFE DO LOMBO 30 €

Sauces

SALSA

Appetizer

TARTARE 14 €

Fish

SEA BASS

Beef Dishes

FILET MIGNON

Carne

GRILLED STEAK

Antipasti - Starters

CARPACCIO

Steaks

GRILLED STEAK

Cocktails

MOJITO

Side Dish

GREEN SALAD

Main Course

PORTUGUESE BEEF

Pizza

MEAT

Cocktails Ohne Alkohol

VIRGIN MOJITO

Vegetariano

TARTE MEDITERRÂNICA 20 €

Hot Drinks

COFFEE

Second Course

BIFE DA VAZIA À SÃO BENTO

Saladas

CARPACCIO DE CARNE

COUVERT

BAGUETE E PÃO ALENTEJANO
TORRADOS, MANTEIGA FRESCA,
MOUSSE DE PAIOLA. 4 €

French

FOIE GRAS

Acompanhamentos

MOLHO EXTRA 3 €

Pratos principais

Café de São Bento Menu



O TRADICIONAL BIFE À CAFÉ DE SÃO BENTO

AS NOSSAS CARNES

BEEF STEAK 27 €

Clássicos

OS TRADICIONAIS CAMARÕES AL AJILLO 14 €

Descubra Também

STRUDEL DE BACALHAU

Acompanhamentos-Side Dishes

ARROZ DE JASMIM 4 €

Da Terra (Carne para todos os gostos)

PORTUGUESE STYLE STEAK

Acompanhamentos (um acompanhamento por prato)

ESPARREGADO DE ESPINAFRES 5 €

Peixe (2 Pax)

BACALHAU GRATINADO 23 €

Desserts

CHOCOLATE CAKE

MILK CREAM

Entrées

STEAK TARTAR

STEAK TARTARE

Starters

ALLEGED BLACK LEG 15 €

BEEF CARPACCIO 13 €

Entradas

O CLÁSSICO FOIE GRAS DE PATO 15 €

CARPACCIO DE SALMÃO FUMADO 13 €

QUEIJO SERRA DA ESTRELA 12 €

Restaurant Category

STEAKHOUSE



FRENCH

DESSERT

Side Dishes

FRENCH FRIES

POTATO CHIPS

FRENCH FRIES

FRIED POTATOES 4 €

Dessert



CARAMEL PUDDING

CHEESECAKE

TARTE TATIN

APPLE PIE

CREME BRULEE

These Types Of Dishes Are Being Served

SALAD

DESSERTS

PANINI

TOSTADAS

TUNA STEAK

Café de São Bento Menu



Sobremesas

SORVETE DE LIMÃO NANNARELLA
COM VODKA 9 €

CHEESECAKE DE FRUTOS
VERMELHOS 8 €

SORVETES E GELADOS
NANNARELLA 7 €

O MELHOR BOLO DE CHOCOLATE
DO MUNDO 9 €

TARTE TATIN DE MAÇÃ 9 €

PUDDING ABBOT PRISCOS

CARPACCIO DE ABACAXI



BUTTER

BEEF

EGG

SHRIMP

POTATOES

SPINACH

GARLIC

SALMON

CHOCOLATE

PRAWNS

HAM

Ingredients Used

[View gallery](#)

[View menu](#)

[View reviews](#)

Café de São Bento Menu



Café de São Bento

Rua São Bento 212 1200-821
LISBOA, Lisbon, Portugal

Opening Hours:

Monday 12:30 -14:30 19:00 -02:00
Tuesday 12:30 -14:30 19:00 -02:00
Wednesday 12:30 -14:30 19:00
-02:00
Thursday 12:30 -14:30 19:00
-02:00
Friday 12:30 -14:30 19:00 -02:00
Saturday 19:00 -02:00
Sunday 19:00 -02:00

Made with [Menu](#)

