

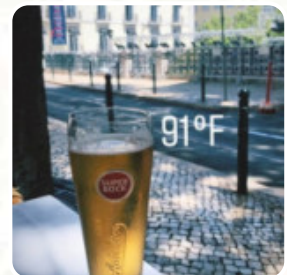
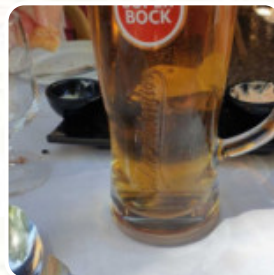
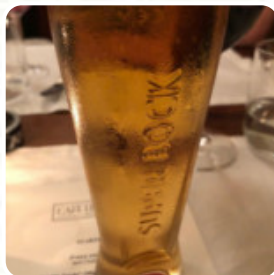


Café No Chiado Menu

<https://menuweb.menu/restaurants/lisboa/cafe-no-chiado>
Largo Picadeiro 10/2, Lisboa 1200-330 LISBOA, Portugal
+33186995715,+351213460501 - cafenochiado.com

Categories

- Meat
- Starters
- Entradas
- Salads
- Soups
- Dessert
- Sobremesas
- Alcoholic Drinks
- Vegetarian
- Seafood
- Rice
- Vegetariano
- Entradas Frias



[View gallery](#)

[View menu](#)

[View reviews](#)

Café No Chiado Menu



Alcoholic Drinks

SANGRIA

Vegetarian

SOPA DE CASTANHA INVERNO 8 €

Antipasti

BURRATA 16 €

Seafood

OCTOPUS AND ORZO

Rice

RISOTTO

Carne

PERNA DE PATO CONFITADA 25 €

From The Grill

RIBS 23 €

Vegetariano

CARIL DE GRÃO E ESPINAFRES 17 €

Entradas Frias

SALADA DE GRÃO COM BACALHAU 19 €

Hot Drinks

COFFEE

Picked For You

PRALINÉ DE CHOCOLATE 7 €

Caril / Curry

GAMBAS CURRY 23 €

Desserts

BOLO DE NOZES COM DOCE DE OVOS 8 €

Peixes

SALMON LOIN 21 €

DOCES

SHAME ON THE OLD ONES 7 €

AS NOSSAS CARNES

PORK CHEEKS 18 €

Continuamos

BACALHAU CONFITADO 23 €

Prato principal

SALADA CESAR 18 €

MINI-PRATOS

CODFISH CAKES 9 €

Starters/ Tapas

CHEESE BOARD 17 €

Soups

SOUP OF THE DAY 5 €

GAZPACHO 8 €

Side Dishes

FRENCH FRIES

FRENCH FRIES

Dessert

CHOCOLATE MOUSSE 8 €

Café No Chiado Menu



CHOCOLATE MOUSSE

Sobremesas

MINI TOUCINHO DO CÉU	2 €
APPLE CRUMBLE	8 €

Saladas

TOMATE E MOZZARELLA	16 €
SALADA DE TOMATE E MOZARELA	16 €

Restaurant Category

- FRENCH
- VEGETARIAN

Salads

MANGA E MOZZARELLA	18 €
SALADA CHIADO	17 €
SALAD	

These Types Of Dishes Are Being Served

- FISH
- BURGER
- SALAD

Fish

BACALHAU À BRÁS	22 €
POLVO À LAGAREIRO COM BATATA A MURRO E GRELOS SALTEADOS	26 €
CREPES DE CAMARÃO GRATINADOS	19 €
LASCAS DE BACALHAU	23 €

Entradas

FLOR DE ALCACHOFRA	16 €
CROQUETES DE VITELA	9 €
PREGUINHO À CAFÉNOCHIADO	17 €
QUEIJO DE CABRA NO FORNO COM MEL	12 €

Meat

BIFINHOS Á CAFÉNOCHIADO	24 €
PASTEIS DE MASSA TENRA	18 €
PERNA DE FRANGO CONFITADA	22 €
RIBS COM MOLHO DE BARBECUE	23 €
BIFE DO LOMBO COM MOLHO À CAFÉNOCHIADO	27 €

Starters



BEEF CARPACCIO	17 €
SALADA MOZZARELLA E MANGA	18 €
CHOQUINHO FRITO COM MAIONEZE DE ALHO	12 €
BREAD, BUTTER AND SPREADS (PAX)	4 €
CROQUETES DE ESPINAFRES E CENOURA	18 €

Ingredients Used

- SHRIMP
- PESTO
- SALMON
- PORK MEAT
- TUNA
- DUCK
- MANGO

Café No Chiado Menu



[View menu](#)

[View reviews](#)

Café No Chiado Menu



Café No Chiado

Largo Picadeiro 10/2, Lisboa
1200-330 LISBOA, Portugal

Opening Hours:

Monday 12:00-15:00
Tuesday 12:00-15:00
Wednesday 12:00-15:00
Thursday 12:00-15:00
Friday 12:00-15:00
Saturday 12:00-15:00
Sunday 12:00-15:00

Made with [Menu](#)

