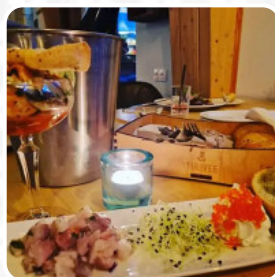




Tulivee Speisekarte

<https://speisekarte.menu/>
Liimala Rand, 43306 Liimala, Ida-Viru County, Estonia
<http://www.tulivee.ee>



Tulivee Speisekarte



Appetizers

SPRING ROLLS

Side dishes

MASHED POTATOES

Appetizer

TARTARE

Soft drinks

PEPSI

Fresh Juices

CARROT JUICE

Restaurant Category

DESSERT

Salads

MANGO SALAD

SALAD

Drinks

BEER

DRINKS

Mexican dishes

TACOS

FISH TACOS

Dessert

CHOCOLATE CAKE

SALTED CARAMEL

CHEESECAKE

COOKIE

Mains

MEAT

SALAD

SOUP

FISH

BREAD

MUSSELS

DESSERTS

Ingredients



DUCK

SEAFOOD

PAPRIKA

POTATOES

MANGO

SCALLOPS

ALMOND MILK

SHRIMPS

CARAMEL

CHOCOLATE

MILK

BUTTER

GARLIC

Tulivee Speisekarte



Tulivee

Liimala Rand, 43306 Liimala, Ida-Viru County, Estonia

Öffnungszeiten:

Freitag 12:00-23:00

Samstag 12:00-23:00

Sonntag 12:00-20:00

Montag 12:00-21:00

Dienstag 12:00-21:00

Mittwoch 12:00-21:00

Donnerstag 12:00-21:00

Gemacht mit [Menu](#)

